

YUFERING

YUFE TRANSFORMING R&I THROUGH EUROPE-WIDE KNOWLEDGE TRANSFER

January 2024

YUFERING at the SwafS Cross - Alliance Forum 2023 R&I in European Universities Alliances

The YUFERING project was present at the SwafS Cross-Alliance Forum 2023, R&I in European Universities Alliances. The YUFE Alliance was represented by Dr. Eva M. Méndez Rodríguez (UC3M).

The event had two objectives: to share good practices and to showcase the great progress made by the Alliances in their R&I dimension. Both objectives were more than achieved.

ORGANISING COMMITTEE



PARTICIPANTS



Mapping Alliances' R&I Best Practices

The following poster highlights 32 Alliances' examples on best practices and outcomes of their R&I projects, organized around the seven transformational modules. All the Alliances' results are linked within the poster and can be accessed at once.

In addition, a contact list regarding the R&I dimension of these Alliances is also included.

[Download the poster](#)

You may download all posters presented in the event [here](#).

Dr. Tatiana-Ioanna Gialama

YUFE WP5 Research Leader
YUFERING Project Manager
Innovation Management Unit
Research and Innovation
Support Service UCY
yufering@ucy.ac.cy



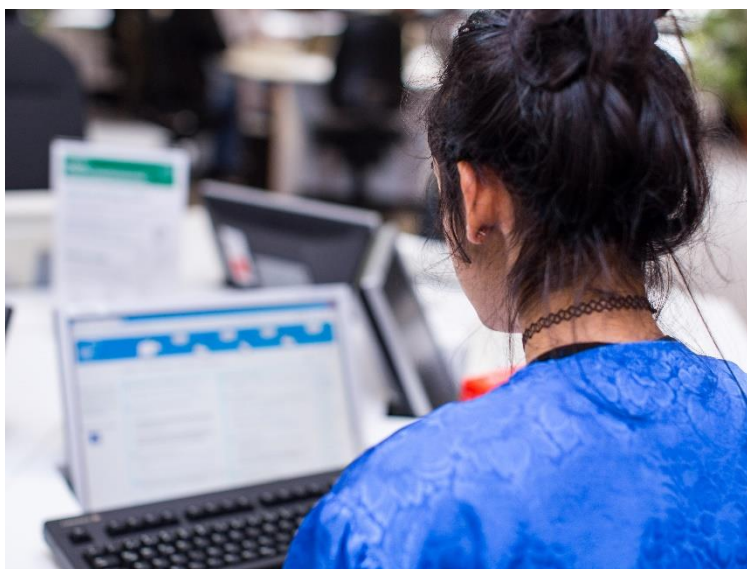
This project has received funding from the European Union's Horizon 2020 research and innovation programme under the grant agreement No. 101016967

Two-day Interactive Workshop: Proper Use of Generative AI in Research

In recent years, artificial intelligence (AI) has advanced rapidly. In this process, academic research and AI have become more and more intertwined. This workshop offers an introduction to the proper use of Generative AI in research. It will take place online and include interactive activities that will augment the trainer's input.

The workshop will be structured as followed:

- Introduction to ChatGPT (or similar Large Language Model, LLM) and its capabilities.
- Hands-on session: How and when to use LLMs as a researcher.
- Examples: using diffusion models (text-to-image) in research.
- Discussion on the potential implications of generative models in research.



You will receive training material to test and deepen your learnings. In the weeks between the first and the second workshop day, you will have enough time to go through the material and apply your learnings. On the second workshop day, you will reflect on your learnings.

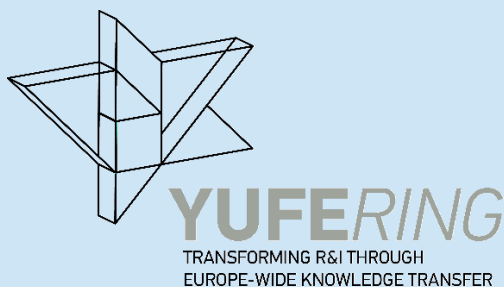
To maximize your learning experience, we recommend that you create a login with OpenAI (or use an existing Google account) and use chatGPT at least once.

The workshop targets doctoral candidates and researchers who are interested in exploring the possibilities of ChatGPT in academic research.

WHO: Henry Woodruff (H.C.A.), Maastricht University

Henry is currently Assistant Professor at the Department of Precision Medicine and Head of The D-Lab. Holding a PhD in astrophysics he now employs machine learning techniques and advanced quantitative image analysis methods to bring





precision medicine closer to clinical implementation. Currently he is working on dozens of projects focused on finding prognostic and diagnostic imaging biomarkers related to diseases such as cancer, diabetes, Alzheimer's, and stroke. Henry is a passionate educator and wishes to bring AI into the curriculum for biomedicine and medicine. He also organizes the international quantitative image analysis course AI4Imaging.

WHEN: Wednesday, 31 January 2024; 10:00 – 13:00 (CET)
Tuesday, 13 February 2024; 10:00 – 12:00 (CET)

MODE: Online

LANGUAGE: English

SEATS: 20

REGISTRATION: Please register via the YUFE Virtual Campus:

<https://virtualcampus.yufe.eu/link/course/XvqNBno7QXcl0IM8>

Registration start: 15 January 2024 (0:00 CET)

Registration deadline: 28 January 2024 (23:59 CET)

Winter highlights

Two-day interactive online
workshop: Proper Use of
Generative AI in Research

Organizer: University of Bremen



This project has received funding from the European Union's Horizon 2020 research and innovation programme under the grant agreement No. 101016967